


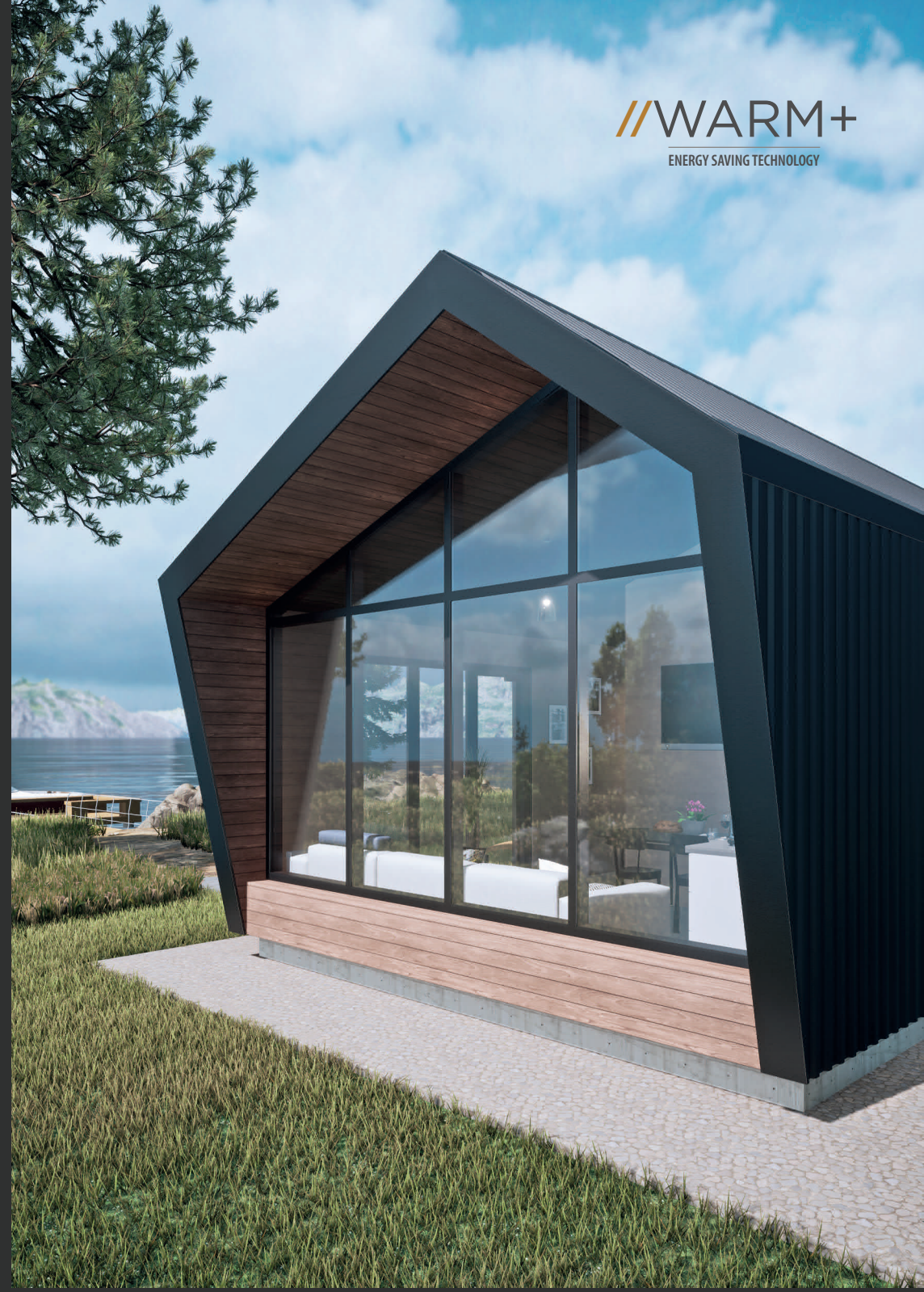


ENERGY EFFICIENT TURNKEY HOUSE

Finnish technology
in modern execution

ENERGY SAVING TECHNOLOGY - WARM+

 +38 (093) 980-83-99
Viber, WhatsApp, Telegram, Signal.



RELIABLE AND WARM HOME

Do you prefer a fixed cost?

Do you need to move
in and live?

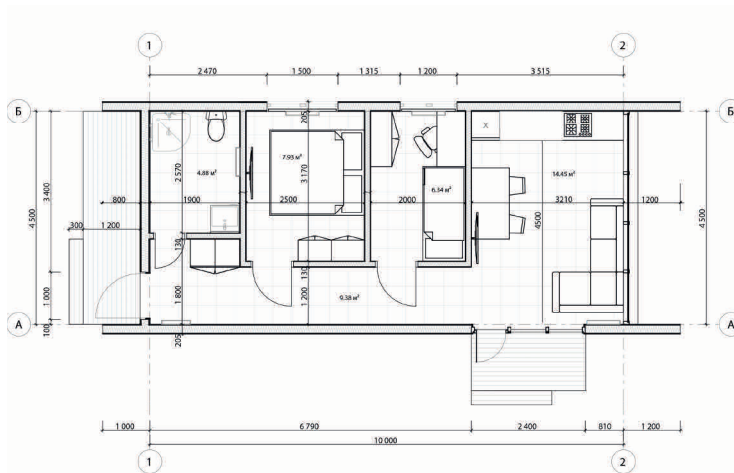
Do you dream of a house that
allows you to save money?

Are you looking for a reliable
builder?



CONSTRUCTION IN A **SHORT TIME!**

ADVANTAGES OF READYCON BUILDINGS



YOU RECEIVE

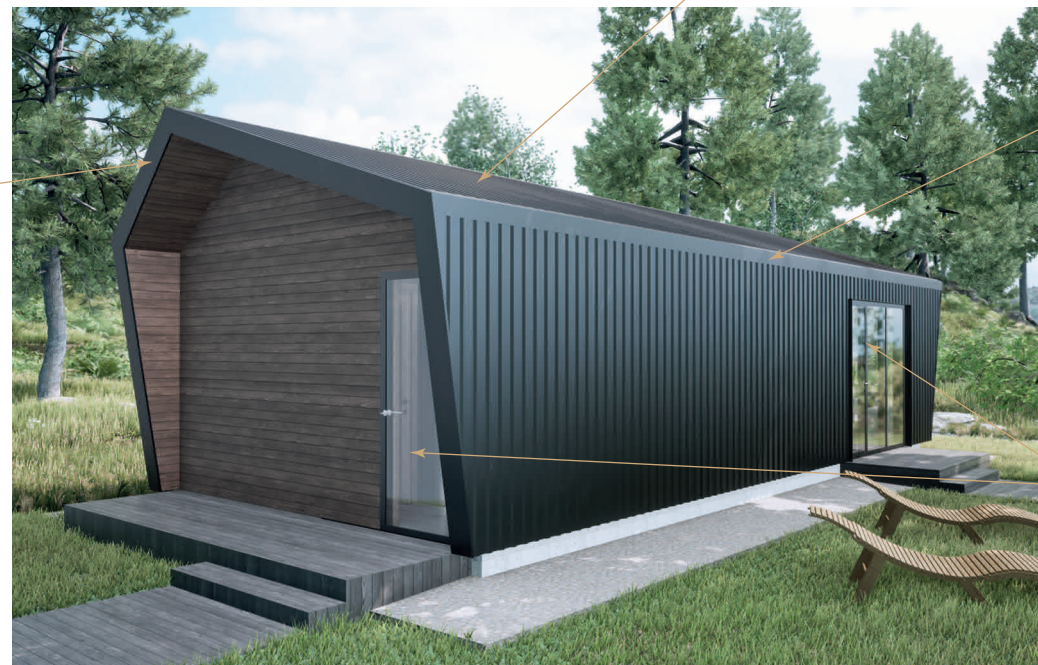
- A sketch plan; a project of metal constructions;
- Short construction period;
- All-season performance of installation works;
- Energy efficiency exceeds the State Building Standards of Ukraine (energy-saving WARM+ technology)
- Finishing outside and inside;
- Electric heating;
- Optimized area of the house - 45 m² and sheds - 9 m²;
- Partially furnished.

EXTERIOR OF THE HOUSE

A house assembled using modern energy-efficient WARM+ technology provides minimal heating costs. We have chosen a fashionable style of the house architecture and used reliable and durable materials during the design.

THE ESTIMATE INCLUDED:

- #1... Roof - profiled graphite sheet RAL 7016;
- #2... Facade decoration - profiled graphite sheet RAL 7016;
- #3... Energy-saving metal-plastic windows and doors with one-sided lamination (anthracite color);
- #4... Arrangement of sheds - a board with a thorn and groove type of fastening.



INTERIOR OF THE HOUSE



YOU RECEIVE

- Insulation and sound insulation of external walls (200 mm non-combustible mineral wool);
- Finishing of the walls: sound insulation of the internal walls and 100 mm non-combustible mineral wool both covered from the inside with laminated wood chipboards;
- Floor covering - ceramic tiles;
- Water supply and drainage system; heating - electric converters;

COMPLETE HOUSE AND FURNISHING:

- Kitchen - working surface l=2.4 m, a sink with a mixer;
- Combined bathroom (boiler 100 l Atlantic, shower box UP! 90RHW, washbasin Duke Mister 55, toilet Cersanit.
- Interior doors from MDF (medium density fiber board);
- Water supply and drainage system.
Heat supply - electric converters. Lighting: pendant lights 60W, surface-mounted LED IP65.

INTERIOR OF THE HOUSE



TOP VIEW

- #1... Corridor- 9,38m²;
- #2...Kitchen-dining room - 14,45m²;
- #3...Bedroom - 7,93m²;
- #4...Children's room - 6,34m²;
- #5...Bathroom - 4,88m²;

Total internal area.....42,98m²
Building area.....52,50m²
Shed area.....9m²



PACKAGE AND PRICE

	COMPLETE SET OF THE HOUSE		
	BASIC	OPTIMAL	MAXIMUM
● Sketch plan with interiors	+	+	+
● Insulated base plate		+	+
● Roof - graphite profiled sheet	+	+	+
● Facade - profiled graphite sheet	+	+	+
● Arrangement of sheds, lacquered wooden batten	+	+	+
● Energy-saving metal-plastic windows, exterior doors	+	+	+
● Insulation of external, internal walls and the ceiling	+	+	+
● Interior decoration - chipboard	+	+	+
● Finishing of the floor - ceramic tile		+	+
● Internal MDF doors	+	+	+
● Electrical network: automation, sockets, switches		+	+
● Water supply and drainage networks		+	+
● Heating - electric converters			+
● Finishing of the apartment: ceramic tiles, a boiler, a shower, a toilet			+
● Furniture: kitchen worktop, a sink with a mixer + a kitchen hood			+
TOTAL*	26 700 \$	36 300 \$	39 900 \$


**Prices for the complete set of the house were formed as of 12 April 2023.*



A group that conducts design, production and construction specializing in the implementation of complete, quickly assembled steel buildings and structures.



Let's communicate...

 +38 (093) 980-83-99


 ReadyConEngineering

 ReadyCon@ukr.net

 Sicheslavska Naberezhna Str. 15-A,
the City of Dnipro

 ReadyCon

 ReadyCon.com.ua

 Mon-Fr 09:00 - 18:00
