



# EASY-TO-ASSEMBLE HOUSE FOR 2 WEEKS!

Reliable housing with a possibility  
of increasing the area of the house

MODERN ENERGY SAVING TECHNOLOGY - WARM+

+38 (096) 506-36-84  
+38 (067) 785-10-57

//WARM+  
ENERGY SAVING TECHNOLOGY



# A HOUSE THAT IS SO MUCH NEEDED!

Do you have a limited budget?

Are you looking for a cost-effective solution?

Do you agree to buy a small house and then expand it without any trouble?

Do you need a reliable builder?



## IT CAN BE LARGER!

# ADVANTAGES OF AN EASY-TO-ASSEMBLY HOUSE FROM **READYCON**



- Assembling a house takes a few days;
- Quick installation on any soil;
- The possibility of increasing the size of the house some time after its installation;
- Energy efficiency exceeds State Building Standards of Ukraine (energy saving WARM+ technology)
- Savings on the arrangement of the foundation (low weight of the house);
- All-season installation.

# FEATURES OF THE TECHNOLOGY

A small prefabricated house with a total area of 35 m<sup>2</sup> can be expanded into several sections after a while. It is possible to make it more spacious - 53 m<sup>2</sup> or 70 m<sup>2</sup>.

You can also immediately install the house model that suits you.



# HOUSE LB-35

Price: negotiable  
Total area: 35m<sup>2</sup>  
Terrace area: 17m<sup>2</sup>

A modern one-floor compact house for living made with light steel thin-walled structure technology (LGSF).

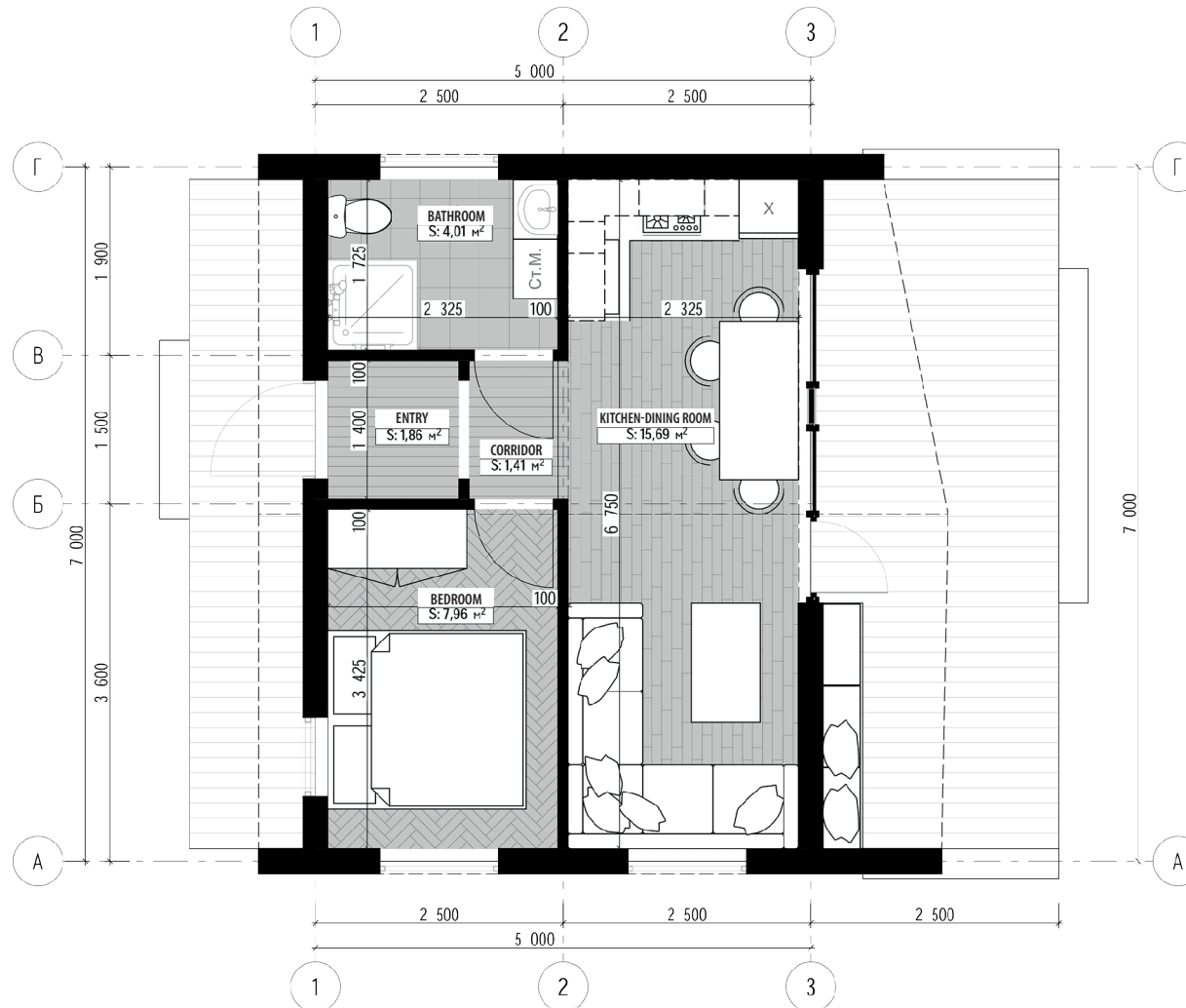
The house is for a family of 2-3 people. A small living room is combined with a compact dining room for convenience. The house has a convenient arrangement of rooms. There is one bedroom. The feature of the house is a terrace of 17 m<sup>2</sup>



# INTERIOR LB-35



# PLAN LB-35



# HOUSE LB-53

Price: negotiable  
Total area: 53m<sup>2</sup>  
Terrace area: 17m<sup>2</sup>

A modern one-floor compact house for living made with LGSF technology.

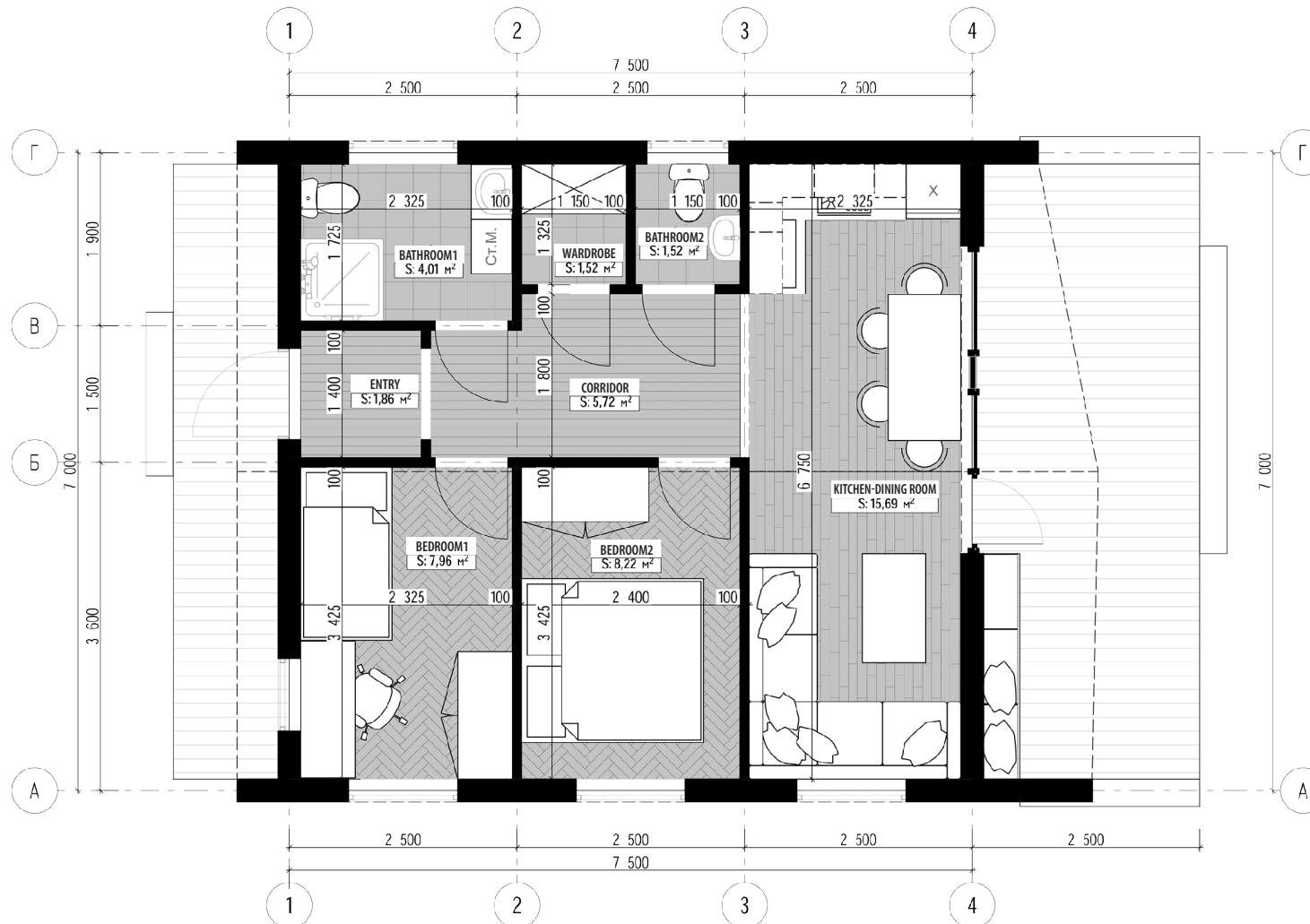
The house is for a family of 3 people. The house has comfortable separate bedrooms, one for adults and the other for a child. The living room is combined with the dining room. A small kitchen will accommodate all the necessary household appliances. The feature of the house is a terrace of 17 m<sup>2</sup>.



# INTERIOR LB-53



# PLAN LB-53



# HOUSE LB-70

Price: negotiable  
Total area:70m<sup>2</sup>  
Terrace area:17m<sup>2</sup>

A modern one-floor house for living made with LGSF technology.

The house is for a family of 3-4 people. The house has comfortable separate bedrooms. The spacious living room is combined with the dining room for convenience, the kitchen will accommodate all the necessary household appliances. In addition to the main premises, the house has a dressing room and a technical room. The feature of the house is a terrace of 17 m<sup>2</sup>.



# INTERIOR LB-70



# PLAN LB-70






A group that conducts design, production and construction specializing in the implementation of complete, quickly assembled steel buildings and structures.



Let's communicate...


---

 +38 (096) 506-36-84  
+38 (067) 785-10-57

 ReadyConEngineering

 ReadyCon@ukr.net


---

 icheslavska Naberezhna Str. 15-A,  
the City of Dnipro

 ReadyCon

 ReadyCon.com.ua

---

 Mon-Fr 09:00 - 18:00

---