



ENCLOSURE PANELS

Modern solutions in high-rise
construction!

EASY, FAST AND ENERGY EFFICIENT!

+38 (067) 285-07-09
+38 (067) 785-10-57



DO YOU NEED ENERGY EFFICIENT WALL PANELS?

Do you want to implement a bright architecture and accelerate the speed of construction?

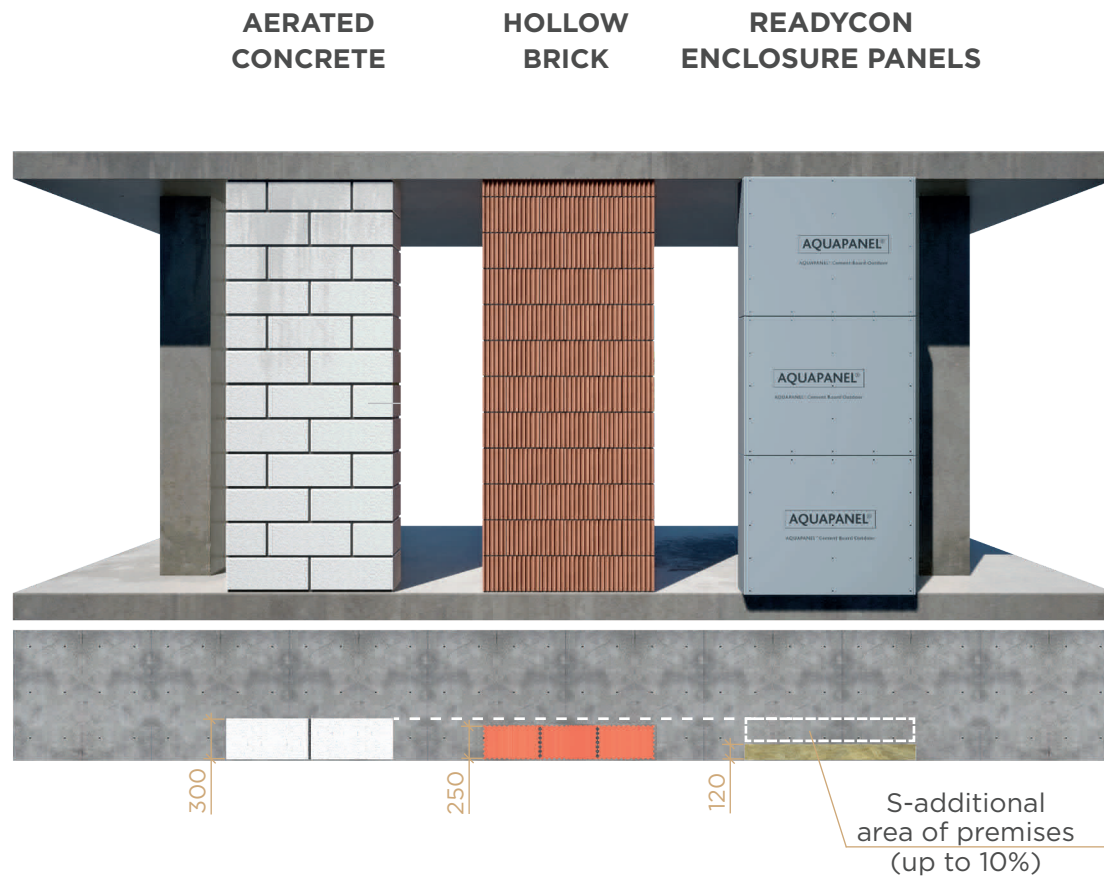
Do you try to reduce the load on the foundation?

Do you want to get additional profit by increasing the internal area of premises?



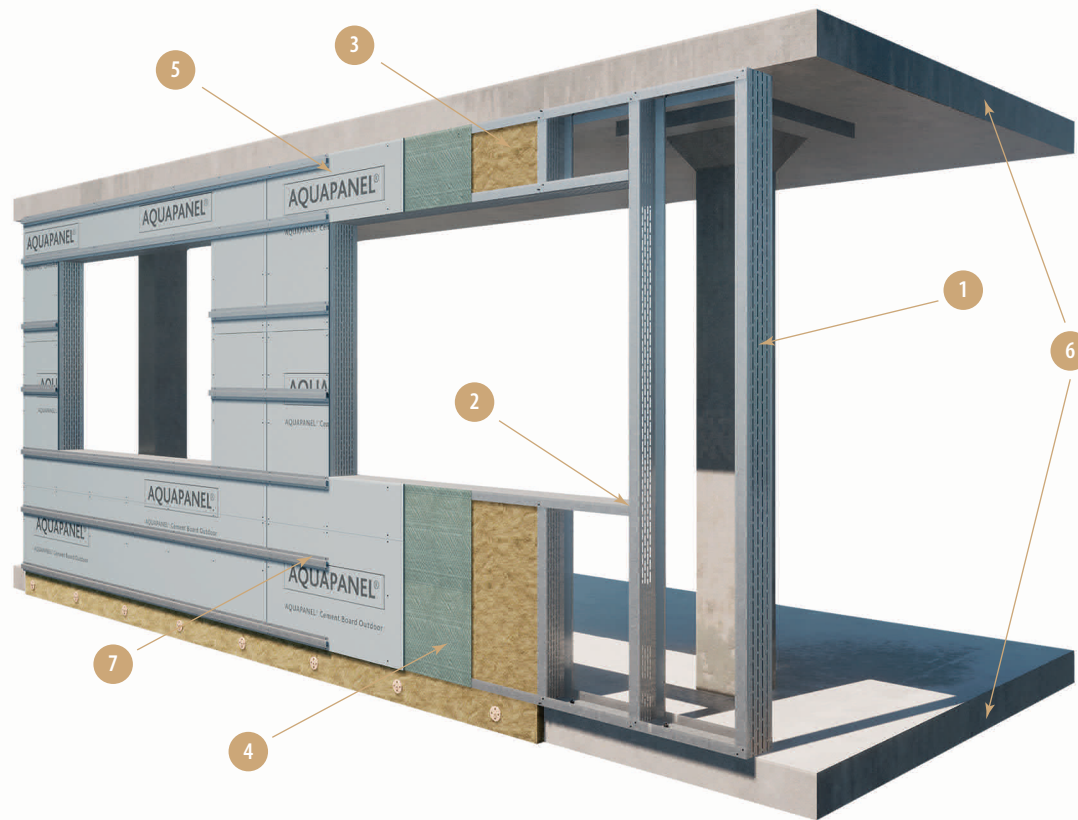
**FACTORY PANELS FROM READYCON
ARE A KEY TO A HIGH-QUALITY FACADE!**

ADVANTAGES OF READYCON TECHNOLOGY



- High energy-saving properties of wall panels ($R > 3.5 \frac{\text{m}^2 \cdot \text{K}}{\text{W}}$);
- Possibility of factory production of finished panels;
- More usable area compared to traditional construction (up to 10%);
- Great acceleration of installation speed;
- Light construction weight;
- All-season installation;
- Comfortable sound insulation parameters $R_v > 58\text{dB}$;
- Optimal cost.

WALL PANEL COMPONENTS

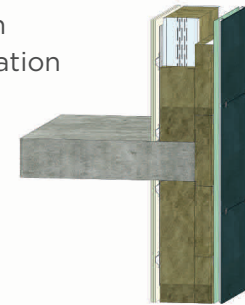


- #1...Posts from thermal profile
- #2..Lintels from thermal profile
- #3..Mineral wool insulation
- #4..Super diffusion membrane

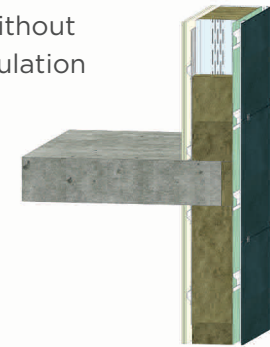
- #5...Windshield plate
- #6...Reinforced concrete floor
- #7...Facade subsystem for various decoration

TYPES OF ADJUSTMENT TO THE FLOOR STRUCTURE

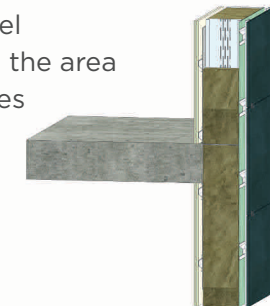
Full resting with additional insulation



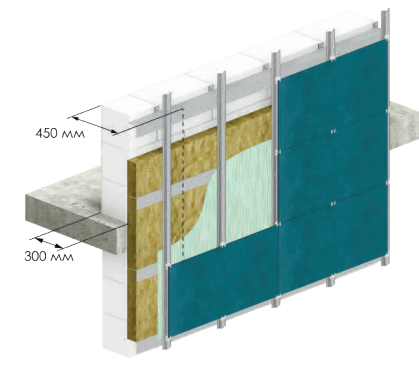
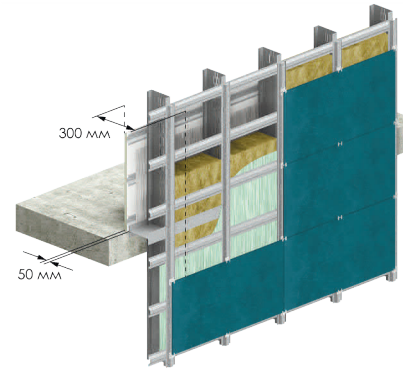
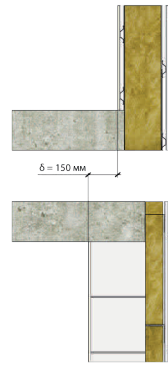
Full resting without additional insulation



A hinged panel for increasing the area of the premises



TECHNICAL COMPARISON



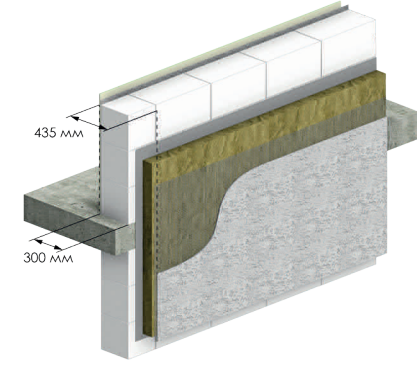
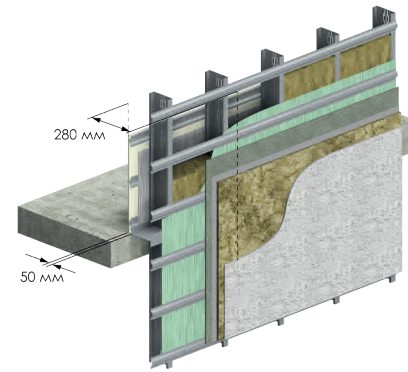
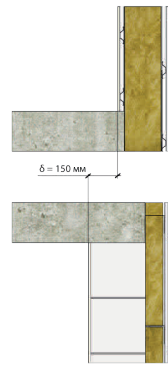
HVF (HINGED VENTILATED FACADE) ENCLOSURE STRUCTURES (CERAMIS GRANITE)

LGSF (LIGHT GAUGE STEEL FRAMING)

AERATED CONCRETE

● Energy efficiency, ($R \frac{m^2 \cdot K}{W}$);	3,86	3,80
● Sound insulation, dB;	59	44
● Weight of 1 m ² of structures, kg;	90	250
● All-season works;	Yes	No
● Resting of the structures on the floor, mm;	50-100	300
● Interior decoration;	finishing surface	additional plaster
● Additional costs;	no	fachwerk posts, reinforcement of holes

TECHNICAL COMPARISON



ENCLOSURE STRUCTURES (DECORATIVE PLASTER)

LGSF (LIGHT GAUGE STEEL FRAMING)

AERATED CONCRETE

● Energy efficiency, ($R \frac{m^2 \cdot K}{W}$);	3,86	3,80
● Sound insulation, dB;	59	44
● Weight of 1 m ² of structures, kg	56	190
● All-season works;	Yes	No
● Resting of the structures on the floor, mm;	50-100	300
● Interior decoration;	finishing surface	additional plaster
● Additional costs;	no	fachwerk posts, reinforcement of holes

FINISHED PROJECTS



A hotel
in the City of Dnipro



A clinic
in the City of Dnipro



An administration building
in the City of Brovary



A residential building
in the City of Kharkiv




A residential building
in the City of Odesa



A group that conducts design, production and construction specializing in the implementation of complete, quickly assembled steel buildings and structures.




Let's communicate...

 +38 (067) 285-07-09
+38 (067) 785-10-57


 ReadyConEngineering

 ReadyCon@ukr.net

 Sicheslavska Naberezhna Str. 15-A,
the City of Dnipro

 ReadyCon

 ReadyCon.com.ua

 Mon-Fr 09:00 - 18:00
