



A WARM HOUSE FOR 100 DAYS!

Comfortable accommodation with
wide architectural opportunities!

MODERN ENERGY SAVING TECHNOLOGY - WARM+

+38 (067) 285-07-09
+38 (067) 785-10-57

//WARM+
energy efficient
technology



AN IDEAL HOUSE IS FASTER AND CHEAPER THAN YOU THINK!

Do you need a home that will be warm in winter and comfortable in summer?

Do you want to speed up the construction?

Are you looking for a qualified builder?
Mistakes usually are expensive.



ADVANTAGES OF TECHNOLOGY // WARM+ FROM READYCON



- Energy-efficient house with minimal heating cost;
- Strength and durability of your house;
- More usable area compared to traditional construction;
- Comfortable sound insulation parameters $R_v > 58\text{dB}$;
- Savings on the arrangement of the foundation (low weight of the house);
- All-season installation;
- Short term of construction;
- Wide architectural opportunities.

FEATURES OF THE TECHNOLOGY WARM*

Roofing A

- #1..Galvanized cover
- #2..PVC membrane
- #3..Geotextile
- #4..Cement clipboard
- #5..Roofing lathing
- #6..Truss

Ceiling B

- #7..Truss
- #8...Super diffusion membrane
- #9...Insulator
- #10..Thermoprofile
- #11..Vapor barrier
- #12..Ceiling lathing
- #13..Gypsum plasterboard

Wall C

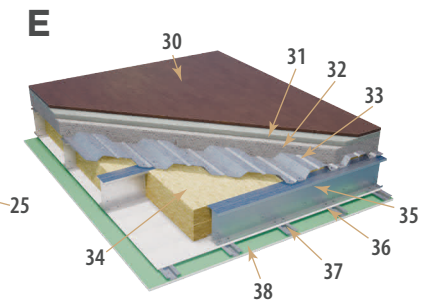
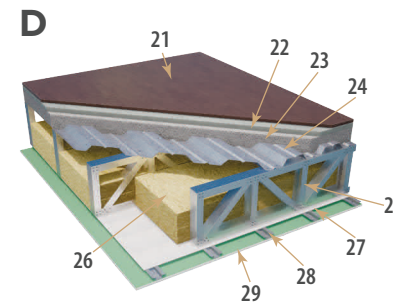
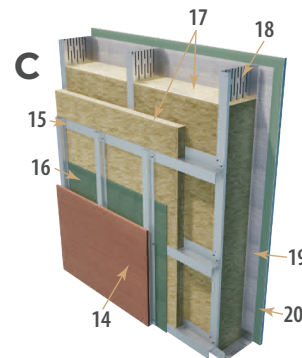
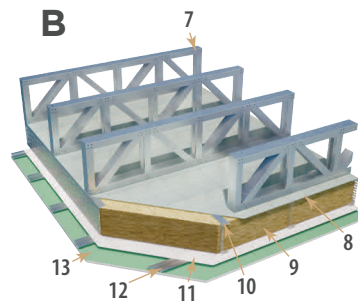
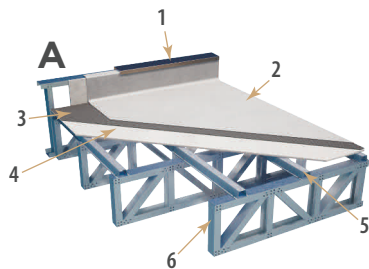
- #14.HPL (high preassure laminate) panel
- #15.Facade lathing
- #16..Wind barrier
- #17..Insulator
- #18..Thermoprofile
- #19..Vapor barrier
- #20..Gypsum plasterboard

Floor structure D

- #21..Floor
- #22.Reinforced screed
- #23.Polystyrol concrete
- #24.Profiled sheet
- #25.Truss
- #26..Insulator
- #27..Vapor barrier
- #28..Ceiling lathing
- #29..Gypsum plasterboard

Floor structure E

- #30.Floor
- #31...Reinforced screed
- #32.Polystyrol concrete
- #33.Profiled sheet
- #34..Insulator
- #35.Beam
- #36.Vapor barrier
- #37..Ceiling lathing
- #38..Gypsum plasterboard



TECHNICAL COMPARISON



RESIDENTIAL BUILDING LGSF WITH OVERALL DIMENSIONS 10X15M

LGSF

AERATED CONCRETE

● Energy efficiency, Rw	4,8	3,4
● Sound insulation, dB	55-61	36-40
● Durability, year	>85	<50
● Internal area, m ²	130	105
● Speed of construction, months.	3	7

FINISHED PROJECTS



A cottage
in the City of Myrhorod



A cottage
in the City of Zaporizhia



A cottage
in the City of Mariupol



A cottage
in Dnipropetrovsk Region




A cottage
in the City of Lviv



A group that conducts design, production and construction specializing in the implementation of complete, quickly assembled steel buildings and structures.




Let's communicate...

 +38 (067) 285-07-09
+38 (067) 785-10-57


 ReadyConEngineering

 ReadyCon@ukr.net

 Sicheslavska Naberezhna Str. 15-A,
the City of Dnipro

 ReadyCon

 ReadyCon.com.ua

 Mon-Fr 09:00 - 18:00
