



READY PREMISES IN 5 MINUTES

Dismountable modular house
IT'S WARM IN WINTER, ENERGY CONSUMPTION IS MINIMUM.

+38 (067) 285-07-09
+38 (067) 785-10-57



MODULAR HOUSE READYBOX QUICKLY AND COMFORTABLY!

Are you searching for the temporary housing?

The housing is to be available now?

Are you tending to the optimum price?



MOBILE AND CONVERTIBLE

DIMENSIONS

RB6

- Dimension (L x W x H)
folded: 6000 mm x 2450 mm x 800 mm
open: 6000 mm x 2450 mm x 2730 mm
overall dimension: 5700 mm x 2150 mm x 2400 mm

RB3

- Dimension (L x W x H)
folded: 3000 mm x 2450 mm x 800 mm
open: 3000 mm x 2450 mm x 2730 mm
overall dimension: 2700 mm x 2150 mm x 2400 mm

BENEFITS OF REDICON'S DESIGN

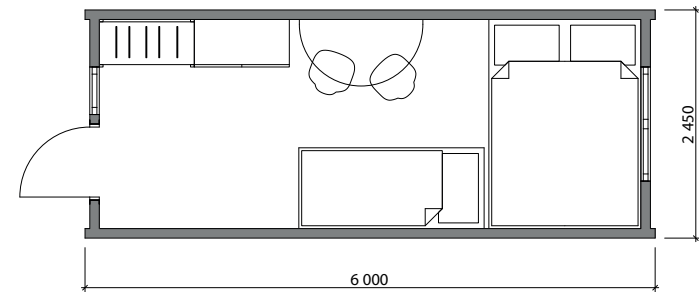
- you may opt for ready houses of our own development and factory assembly;
- energy efficient house with minimal costs for the heating;
- a modular building is strong and lasting;
- all seasons are suitable for installation;
- economical delivery (the trailer can carry 6 folded houses at once);
- optimal price.



FIELD PURPOSE

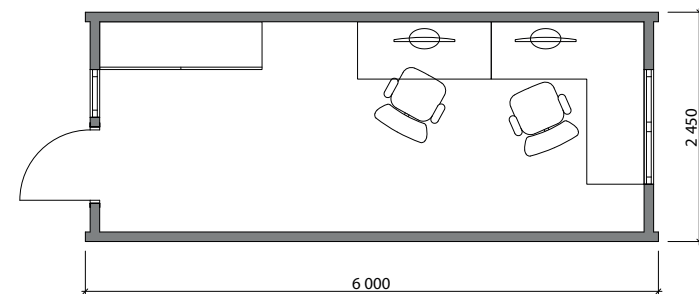
RESIDENTIAL

- building;
- project;
- town.



ADMINISTRATIVE

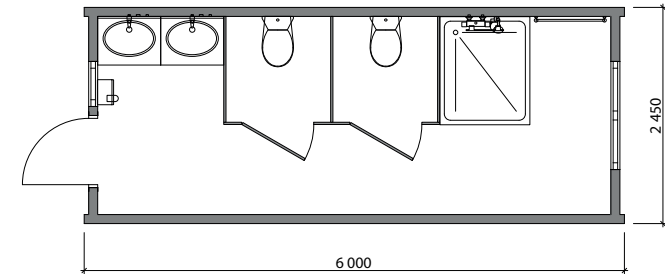
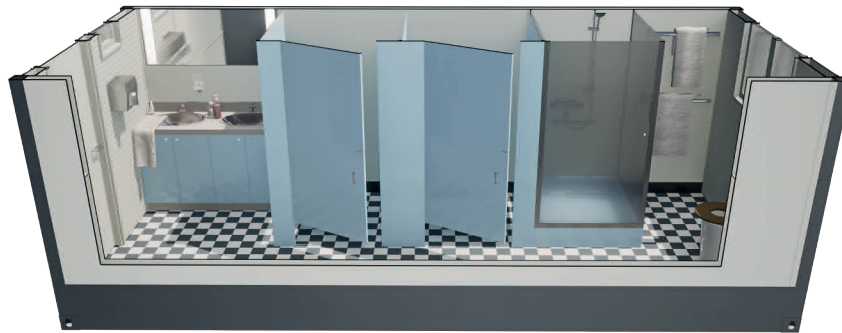
- office;
- point;
- head office;



FIELD PURPOSE

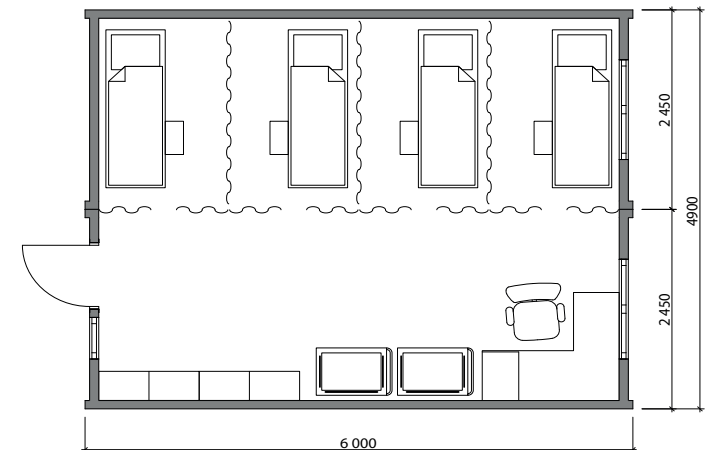
UTILITY SPACE

- canteen;
- shower;
- clothes washing;
- shop.

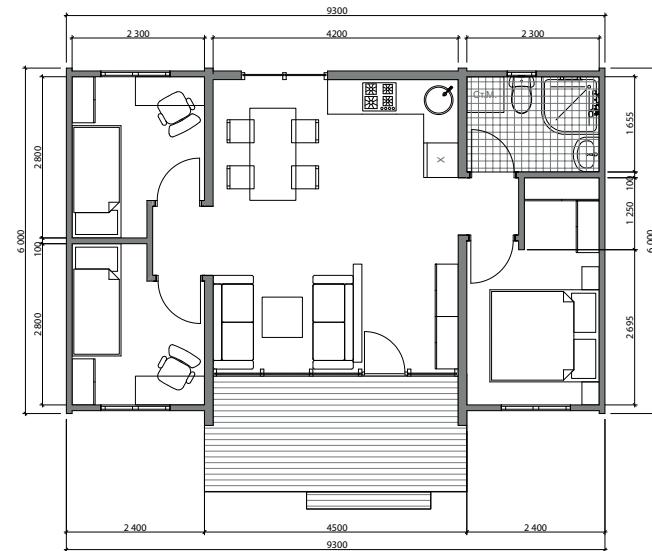


FOR SPECIAL PURPOSE

- hospital;
- infirmary.



PROJECT: COMBINED MODULE



ONE FLOOR HOUSE - 57,1 M²

A modern compact, one floor house. Made by using LSTC technology.

A house for 3-5 persons in a family. There are separate bedrooms in the house. A spacious living room goes near the kitchen to make it more useful. The 9 sqm terrace is a peculiarity of the house. The bedrooms contain niches for the inbuilt furniture. The kitchen is able to have all the household equipment placed.


In addition, if there is a demand, we can provide HVAC systems (Heating, ventilation, conditioning).



We are a project construction group specializing in building complete and fast constructions including the steel structures.




Let's communicate...

 +38 (067) 285-07-09
+38 (067) 785-10-57


 ReadyConEngineering

 ReadyCon@ukr.net

 Dnipro
Sicheslavaska Naberezhna street, 15-a.

 ReadyCon

 ReadyCon.com.ua

 Mon-Fri 09:00 - 18:00
